

A

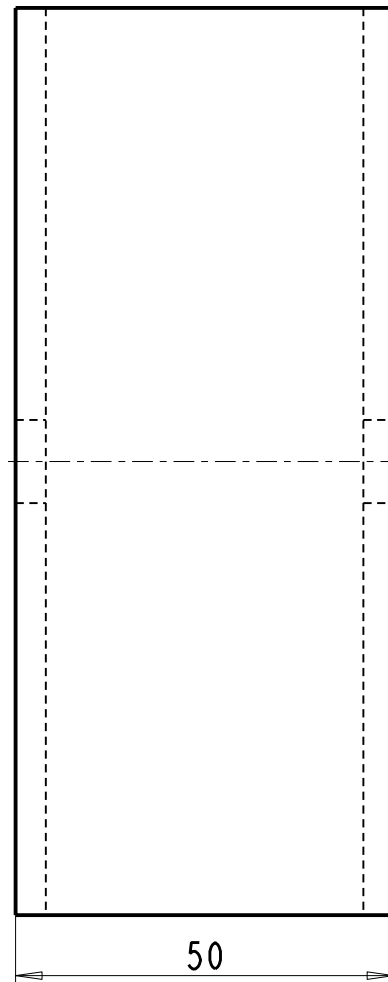
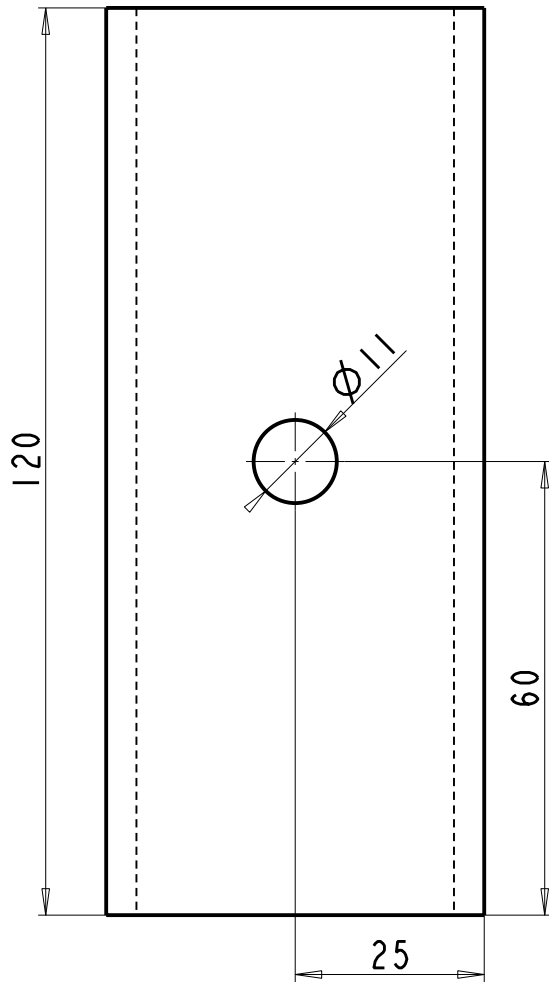
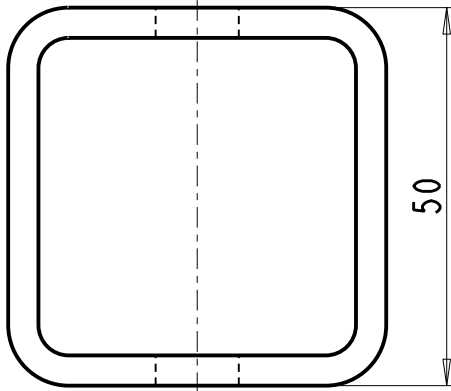
B

C

D

12.5

-0.3



-	-	JEKL - 50x50x5-120	0.650	10
	CSN EN 10219-2	S235JRH (1.0039) dle EN 10219-1		
CISLO POLOZKY	NAZEV - OZNACENI	POLOTOVAR	HMOTNOST [kg]	MNOZSTVI [ks]
	VYKRES - NORMA	MATERIAL		

Tento vykres je duševním vlastnictvím ZIMA-Engineering.

ZIMA-Engineering www.zima-engineering.cz tel.: 774 206 965 e-mail: vladimir.zima@zima-engineering.cz	FORMAT: A4	PRESNOST: ISO 2768-mK	NAZEV:	LIST: 1/1	
	1.000	TOLEROVANI: ISO 8015	POUZDRO		
		PROMITANI: EU			
		KRESLIL: ing. Vladimír Zima			CISLO: ZE0031-0101-0001.00
		SCHVALIL:			
DNE: 24.07.2014					

A

B

C

D